

EQUIP. TYPE *R390A/URR* EXP. NO.

COL 5061953 002

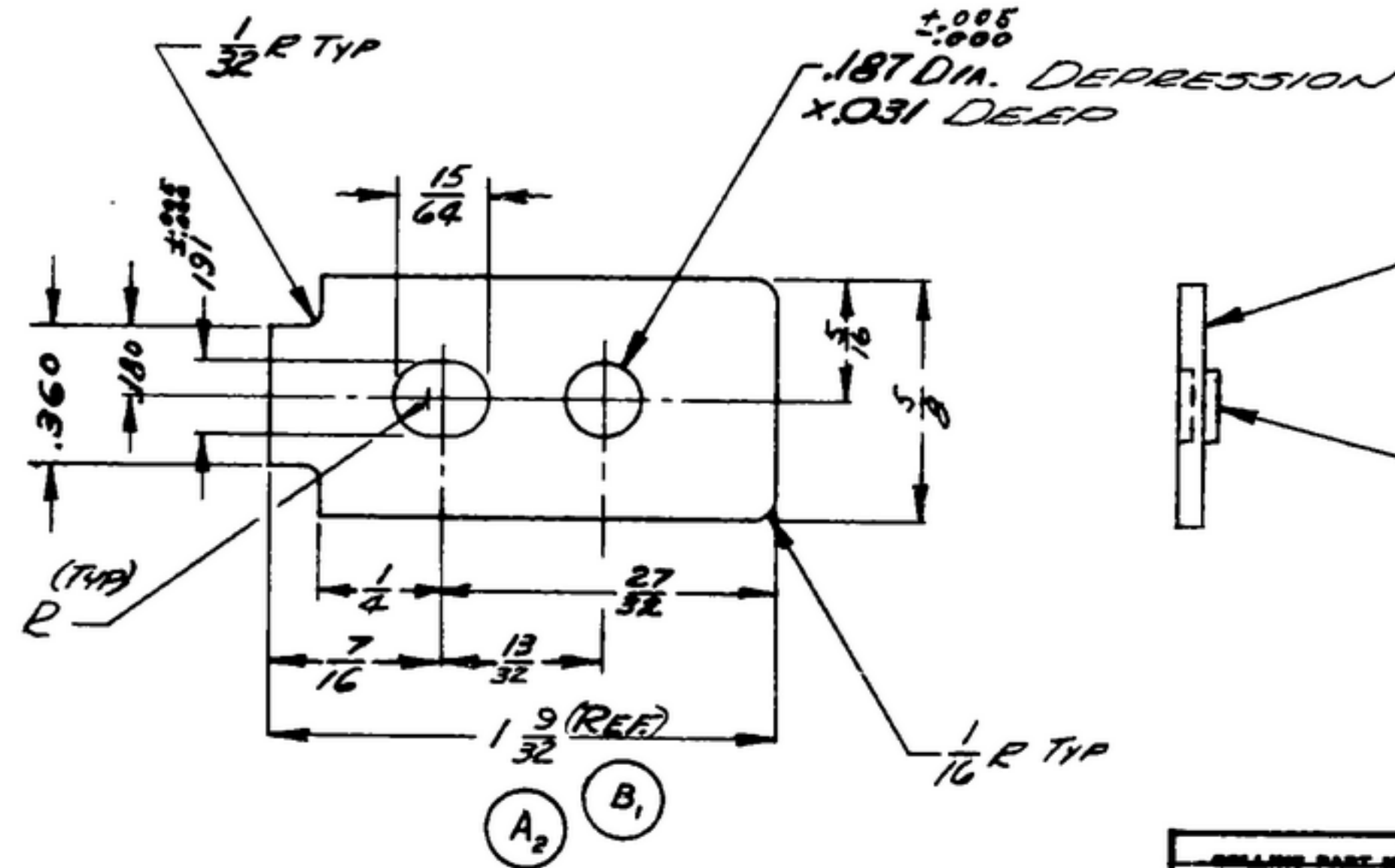
NOTICE: WHEN GOVERNMENT DRAWINGS, SPECIFICATIONS, OR OTHER DATA ARE USED FOR ANY PURPOSE OTHER THAN IN CONNECTION WITH A DEFINITELY RELATED GOVERNMENT PROCUREMENT OPERATION, THE UNITED STATES GOVERNMENT THEREBY INCURS NO RESPONSIBILITY AND ANY OBLIGATION WHATSOEVER; AND THE FACT THAT THE GOVERNMENT MAY HAVE FORMULATED, FURNISHED, OR IN ANY WAY SUPPLIED THE SAID DRAWINGS, SPECIFICATIONS, OR OTHER DATA IS NOT TO BE REGARDED BY IMPLICATION OR OTHERWISE AS IN ANY MANNER LICENSING THE HOLDER OR ANY OTHER PERSON OR CORPORATION, OR CONVEYING ANY RIGHTS OR PERMISSION TO MANUFACTURE, USE, OR SELL ANY PATENTED INVENTION THAT MAY IN ANY WAY BE RELATED THEREIN.

THIS DOCUMENT HAS BEEN PURCHASED BY THE GOVERNMENT AND MAY BE REPRODUCED AND USED IN CONNECTION WITH ANY GOVERNMENT PROCUREMENT OR MAINTENANCE OPERATION.

*FOR INFORMATION ONLY. CONTRACTOR MAY AT HIS OPTION DEVIATE FROM THESE PROCESS DETAILS.

REVISIONS

SYM	DESCRIPTION	DATE	APPROVAL
*SWE APPROVAL			
A ₂	A ₁ - COMP 301 WAS 302 A ₂ - 1 15/16 WAS 1 9/32	1 OCT 59	43428-PC-59 REF'D
B ₁	B ₁ - 1 9/32 WAS 1 15/16	5 APRIL 60	43428-PC-59 REF'D PME



(A₁)
 MATL: *CRES, COMP 301, COND 1/2 H, PER SPEC MIL-5-5059, .062 THICK*
 FINISH: *E300 PER SPEC. MIL-F-14072*
~~* COLLINS 5061953 002~~

COLLINS PART NO.	ITEM	REQD	PART NO.	DESCRIPTION	MATL	MATL SPEC
LIST OF MATERIAL						
-COLLINS PART NO. 558-0168-002-						

COLLINS NO.	QTY	NEXT ASSY	USED ON
558-0162-002	1	SM-B-248848 SC-DL-248715	
APPLICATION			

DRAWN *R. B. B.* CHECKED *[Signature]* APPROVED

UNLESS OTHERWISE SPECIFIED:
 DECIMAL DIMENSIONS INCLUDING HOLE SIZES MAY VARY ±.005
 FRACTIONAL DIMENSIONS INCLUDING HOLE SIZES MAY VARY ±1/64
 MACHINED ANGLES MAY VARY ±1°
 SHEARED ANGLES MAY VARY ±.25°
 BROKEN ANGLES MAY VARY ±1°
 ECCENTRICITY BETWEEN ANY DIAMETERS ON THE SAME CENTERLINE SHALL NOT EXCEED .010 TOTAL INDICATOR READING.
 ALL DIMENSIONS ARE FINISH DIMENSIONS INCLUDING APPLIED FINISH AND ARE GIVEN IN INCHES.

-COLLINS-RADIO-00-
 -SIGNAL-CORPS-100A
 1A 21A-PH-51-93

SIGNAL CORPS

REVIEWED *PME*

APPROVED *HLV*
PME

DATE *6 DEC 55* SCALE *2/1*

DEPARTMENT OF THE ARMY
 SIGNAL CORPS ENGINEERING
 LABORATORIES

FORT MONMOUTH NEW JERSEY

SM-B-248848